

LARGE LOAD WORKSHOP



OVERVIEW

Today multi-gigawatt large loads like data centers, manufacturing facilities, and hydrogen plants are seeking to connect to the grid faster than ever before. This poses new challenges for grid operators and load developers. This workshop will provide an overview of large loads, go over data center and load design, review the risks loads pose to the grid along with utility perspectives on the loads, and finally will cover oscillations induced by AI training.

By attending you'll get the opportunity to learn from leaders in a field that is growing at a rapid pace and build your network.

No prior experience is needed but a background in power systems is helpful. If you're an engineer working on the transmission system, work in policy, or want to learn how to connect loads to the grid then this workshop is for you!

Our Speakers

Alex Shattuck

Director of Grid Transformation - ESIG

Cory Henderson

Associate Consultant - Burns & McDonnell

Ming-Seung Ko

Postdoctoral Fellow - UT Austin

Evan Mickelson

Engineer - NERC

Narges Ghiasi

Engineer - Dominion

Mauricio Cespedes

Systems Engineer - Meta

Lauren Bly

Energy Program Manager - Meta

Sharma Shivam

Energy Program Manager - Meta

Thorkild Rasmussen

Electrical Engineering Manager - MARA

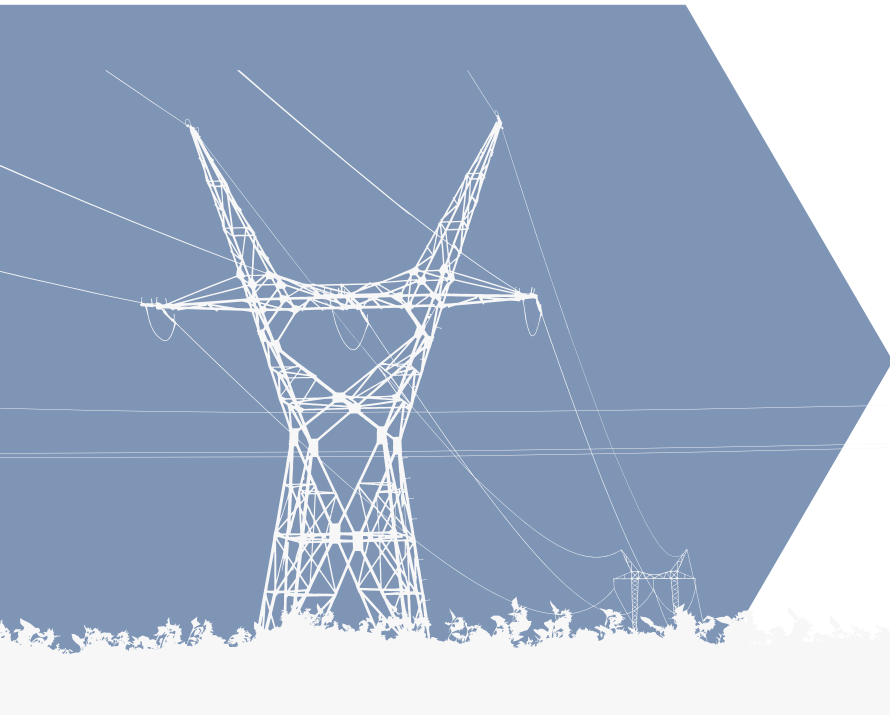


November 3rd to 4th
8:15 AM to 5 PM



Register at:

<https://events.vtools.ieee.org/m/484004>



LARGE LOAD WORKSHOP



Burns & McDonnell
Bridgepoint Building 4
6200 Bridge Point Pkwy #400
Austin, TX

AGENDA

Day 1

- 8:00 – 8:15 AM Center opens
- 8:15 – 9:00 AM Registration and Breakfast
- 9:00 – 9:15 AM Opening and Speaker Introduction
- 9:15 – 10:30 AM - Overview of Large Loads
- 10:30 – 11:00 AM Morning Break
- 11:00 – 12:30 PM Load Developer Perspective Part 1
- 12:30 – 1:30 PM Lunch
- 1:30 – 3:00 PM Part 2 - Load Developer Perspective
- 3:00 – 3:30 PM Afternoon Break
- 3:30 – 4:45 PM - Large Load Reliability Risks
- 4:45 – 5 PM Wrap-up and Q&A

Day 2

- 8:00 – 8:15 AM Center opens
- 8:15 – 9:00 AM Registration and Breakfast
- 9:00 – 9:15 AM Opening and Speaker Introduction
- 9:15 – 10:30 AM - Utility Perspective of Large Loads
- 10:30 – 11:00 AM Morning Break
- 11:00 – 12:30 PM - Large Load Oscillations
- 12:30 – 1:30 PM Lunch
- 1:30 – 3:00 PM - 765 kV to Enable Load Growth
- 3:00 – 3:30 PM Afternoon Break
- 3:30 – 4:45 PM - Panel Discussion with Speakers
- 4:45 – 5 PM Wrap-up and Q&A

PRICING

Early Registration Fee (through 10/1/25)

- IEEE Members – \$400
- Non-IEEE Members – \$500
- IEEE Student and Life Members – \$150

Late Registration Fee (after 10/1/25)

- IEEE Members – \$500
- Non-IEEE Members – \$600
- IEEE Student and Life Members – \$200

Breakfast, snacks, and lunch are provided.
Attendees will receive 12 PDHs.



Register at:
<https://events.vtools.ieee.org/m/484004>



November 3rd to 4th
8:15 AM to 5 PM